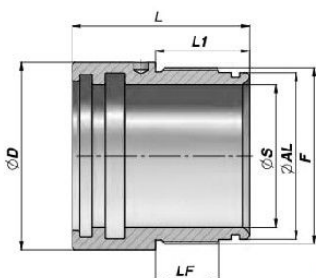
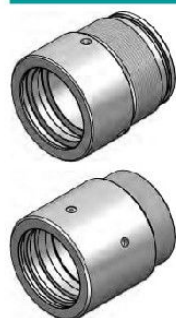


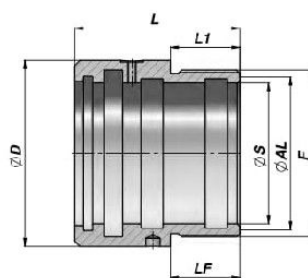
CGT

TETE DE GUIDAGE
HEAD BUSH

Series M250



TYPE 1



TYPE 2

Code Code	TYPE	ØS	ØAL	ØD	F	LF	L	L1	kg	Boîte Box	Pcs Pcs	Pochette de joints Seal kits
CGT0200300	1	20	30	39.0	M34x1.5	15	57	27	0,25	Z25CGT0200300	25	GKGT020030
CGT0250350	1	25	35	44.0	M39x1.5	19	65	32	0,34	Z25CGT0250350	25	GKGT025035
CGT0300400	1	30	40	49.0	M44x1.5	19	65	32	0,39	Z25CGT0300400	25	GKGT030040
CGT0350450	1	35	45	54.0	M49x1.5	19	65	32	0,44	Z12CGT0350450	12	GKGT035045
CGT0400500	1	40	50	59.0	M54x1.5	22	70	35	0,53	Z12CGT0400500	12	GKGT040050
CGT0450550	1	45	55	64.0	M60x1.5	22	70	35	0,59	Z12CGT0450550	12	GKGT045055
CGT0500600	1	50	60	69.0	M64x1.5	22	75	40	0,67	Z12CGT0500600	12	GKGT050060
CGT0600700	1	60	70	79.0	M74x1.5	27	75	40	0,78	Z10CGT0600700	10	GKGT060070
CGT0700900	2	70	85	100.0	M90x2	30	90	30	1,99	Z05CGT0700900	5	GKGT070000
CGT0800960	2	80	90	107.0	M96x2	40	95	40	1,90	Z05CGT0800960	5	GKGT080000
CGT1001240	2	100	120	138.5	M124x2	42	157	42	7,12	Z02CGT1001240	2	GKGT100000

MATERIEL TYPE 1 : FONTE EN-GJL 250 (G25-UNI 5007/EN 1561)
TYPE 1 MATERIAL : HYDRAULIC CAST IRON EN-GJL 250 (G25-UNI 5007/EN 1561)

MATERIEL TYPE 2 : ACIER S1 52.3 / UNI C40
TYPE 2 MATERIAL : STEEL S1 52.3 / UNI C40

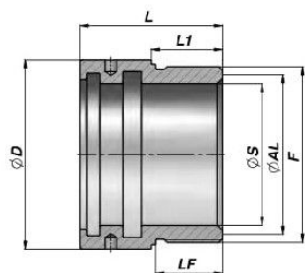
JOINTS : VOIR PAGE 74
SEALS : SEE PAGE 74

SUR DEMANDE : KIT JOINTS IN VITON
ON REQUEST : VITON SEAL KITS

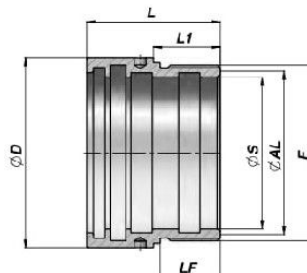
CGHFRT

TETE DE GUIDAGE
HEAD BUSH

Series M250



TYPE 1



TYPE 2

Code Code	TYPE	ØS	ØAL	ØD	F	LF	L	L1	kg	Boîte Box	Pcs Pcs	Pochette de joints Seal kits
CGHFRT0020	1	20	30	40	M34x1.5	18	42	20	0,22	Z50CGHFRT0020	50	GKGFRT020
CGHFRT0025	1	25	30	40	M34x1.5	18	42	20	0,15	Z50CGHFRT0025	50	GKGFRT025
CGHFRT0030	1	30	40	50	M44x1.5	19	46	21	0,33	Z50CGHFRT0030	50	GKGFRT030
CGHFRT0035	1	35	40	50	M44x1.5	19	46	21	0,23	Z50CGHFRT0035	50	GKGFRT035
CGHFRT0040	1	40	50	60	M54x1.5	28	59	30	0,53	Z25CGHFRT0040	25	GKGFRT040
CGHFRT0045	1	45	50	60	M54x1.5	28	59	30	0,37	Z25CGHFRT0045	25	GKGFRT045
CGHFRT0050	1	50	60	70	M64x1.5	28	60	30	0,63	Z25CGHFRT0050	25	GKGFRT050
CGHFRT0060	1	60	70	80	M74x1.5	28	60	30	0,75	Z20CGHFRT0060	20	GKGFRT060
CGHFRT0070	2	70	80	95	M85x2	32	70	35	1,05	Z05CGHFRT0070	5	GKGFRT070
CGHFRT0080	2	80	90	105	M95x2	36	80	40	1,38	Z05CGHFRT0080	5	GKGFRT080
CGHFRT0090	2	90	100	115	M105x2	36	80	40	1,41	Z05CGHFRT0090	5	GKGFRT090
CGHFRT0100	2	100	110	125	M115x2	45	100	50	2,02	Z03CGHFRT0100	3	GKGFRT100

MATERIEL TYPE 1 : ACIER 9SMn28 AVEC TRAITEMENT "NI-TEMPER"
TYPE 1 MATERIAL : STEEL 9SMn28 WITH "NI-TEMPER" TREATMENT

MATERIEL TYPE 2 : ACIER S1 52.3 / UNI C40
TYPE 2 MATERIAL : STEEL S1 52.3 / UNI C40

JOINTS : VOIR PAGE 74
SEALS : SEE PAGE 74

SUR DEMANDE : KIT JOINTS IN VITON
ON REQUEST : VITON SEAL KITS

TETE DE GUIDAGE - HEAD BUSHES

GKGT

Series M250

KIT JOINTS POUR TETE DE GUIDAGE "CGT"
SEAL KITS FOR "CGT" HEAD BUSH

Code Code	Tige Rod	O-Ring Dowty	GHK	TTI-L TTS - TSE	O-Ring Dowty	AGI x2
GKGT020030	20	120	078110	TTI 20-28/L	025	-
GKGT025035	25	123	098129	TTI 25-33/L	123	-
GKGT030040	30	126	118149	TTI 30-38/L	126	-
GKGT035045	35	129	137169	TTS 596	129	-
GKGT040050	40	132	157188	TTI 40-48/L	132	-
GKGT045055	45	136	177208	TTI 45-55/2L	136	-
GKGT050060	50	138	196228	TTI 50-60/L	138	-
GKGT060070	60	145	236267	TSE 275236	145	-
GKGT070000	70	237	275322	TSE 334275/1	-	76x 70x12.8
GKGT080000	80	239	314346	TSE 377314/Al	-	86x 80x12.8
GKGT100000	100	248	393440	TSE 444393/Al	-	106x100x12.8

GKGHFRT

Series M250

KIT JOINTS POUR TETE DE GUIDAGE "CGHFRT"
SEAL KITS FOR "CGHFRT" HEAD BUSH

Code Code	Tige Rod	GHK	TTI-L TTS - TSE	O-Ring 90 Sh. Dowty	AGI x2
GKGHFRT020	20	078110	TTI 20-28/L	123	-
GKGHFRT025	25	098129	TTI 25-33/L	123	-
GKGHFRT030	30	118149	TTI 30-38/L	129	-
GKGHFRT035	35	137169	TTI 35-43	129	-
GKGHFRT040	40	157188	TTI 40-48/L	136	-
GKGHFRT045	45	177208	TTS 634	136	-
GKGHFRT050	50	196228	TTI 50-60/L	142	-
GKGHFRT060	60	236267	TTI 60-70/L	149	-
GKGHFRT070	70	275307	TTI 70-80	235	76x 70x12.8
GKGHFRT080	80	314346	TTI 80-90	238	86x 80x12.8
GKGHFRT090	90	354401	TTI 90-105/2	242	96x 90x12.8
GKGHFRT100	100	393440	TTI 100-113/1	245	106x100x12.8